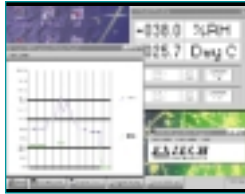


# Heavy Duty Infrared Thermometer

Non-contact temperature measurements plus RS-232 PC interface for Datalogging

## Features:

- 0.1/1° resolution provides more precision in low temperature ranges
- °F/°C switchable to 572°F or 300°C
- Wide emissivity adjustment 0.1 to 0.95 allows for a wide range of applications
- Remote IR probe with 23" (600mm) cable
- Simple to use, just point and read
- Fast 1 second sampling time
- Super large 1.4" (36mm) LCD display
- Recall Min/Max readings
- Data Hold
- Includes RS-232 PC serial interface
- Auto power off saves battery life
- Optional serial cable and Data Acquisition Software enables user to display and capture readings on a PC, set time intervals, and alarms
- Optional datalogging module stores over 900 readings which may be later transferred to a PC
- Complete with rubber holster and 9V battery.



## Interface Options:

- Optional Windows® Data Acquisition Software and serial cable enable user to display and capture readings on a PC, and set time intervals and alarms
- Optional battery operated Datalogger module stores over 8000 readings for later transfer to a PC

## Applications:

- Use for any temperature measurement where the contact method is not practical such as: Diesel engine, steam applications, high tension wires, heating elements, etc.
- Locate problems in electrical and mechanical systems
- Find "hot spots" to prevent problems before they occur.



## Specifications:

Range:	14.0°F to 572°F or -10.0 to 300°C
Accuracy:	2% of rdg or 2°C (3°F)
Sensor Wavelength:	6 to 12 microns
Field of View:	7:1 (i.e. at 21" distance spot size is 3")
Dimensions/Weight:	7.1x2.8x1.3" (180x72x32mm) / 13oz (370g). Probe: 148x36x36mm

## Ordering Information

407428.....Heavy Duty InfraRed Thermometer

### Accessories:

409997.....Soft Vinyl Pouch Carrying Case  
140001.....Hard Vinyl Carrying Case  
156119.....117 VAC Adaptor  
156221.....220 VAC Adaptor

### Options:

407000.....Data Acquisition Software and cable  
380340.....Battery Operated Datalogger Module, 32K RAM