

AMS™ Suite: Intelligent Device Manager Wireless Interface

- *Identify and access devices with an interface to the 1420 Wireless Gateway*
- *Troubleshoot and gain access to critical device alerts*
- *Expand the value of AMS Device Manager to new areas of your plant*

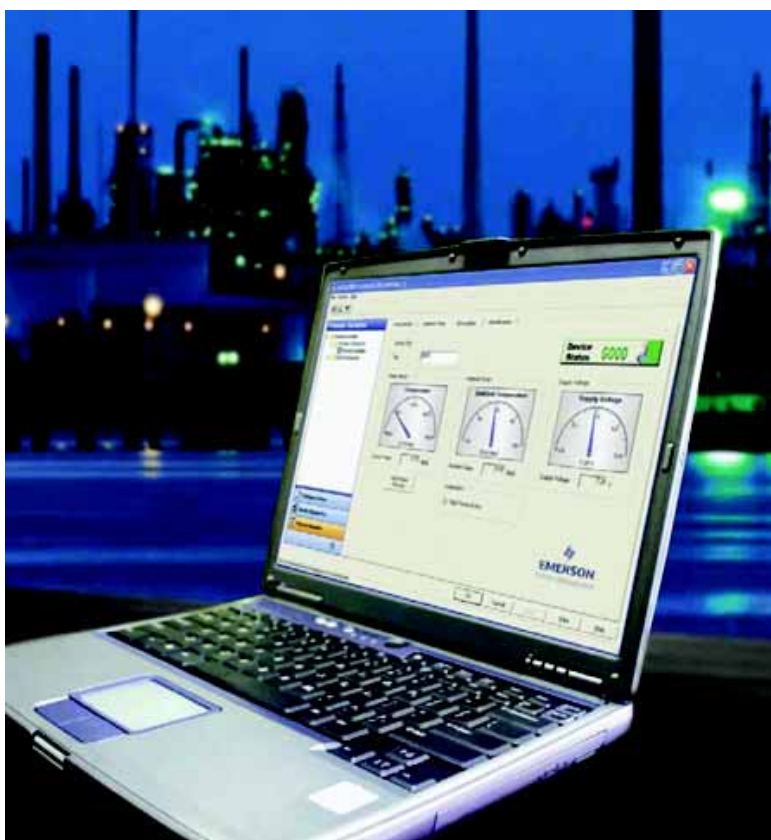


FIGURE 1. AMS Device Manager gives you easy access to HART, FOUNDATION™ fieldbus, and wireless HART devices, all in a single application.

Access More Plant Diagnostics with Lower Costs

The AMS Device Manager Wireless Interface gives you easy access to your wireless HART® devices via the 1420 Wireless Gateway. Use AMS Device Manager to configure, calibrate, diagnose, and document device activities in one location, while managing your HART, FOUNDATION fieldbus, and wireless HART® devices in a single application. With the Wireless Interface, you get a cost-effective solution for remote configuration and diagnostics without the additional costs of multiplexer installation and wiring.

Communicate with Inaccessible Assets

The Wireless Interface helps you get more out of your intelligent wireless field devices through an online AMS Device Manager system. With AMS Device Manager, you can quickly check the health of a connected WirelessHART device using the diagnostics and monitoring capabilities. The Alert Monitor summary screen provides an overview of all device alerts and lets you access additional device information for more details.

AMS Device Manager makes configuration of wireless devices fast and easy. Use configuration management to change, store, compare, and transfer device configurations without ever going into the field. Streamline calibration by defining device test schemes, scheduling device calibration, and managing device calibration data.

Simplify documentation around device tasks with the Audit Trail. In addition, manual entries can be created to document events that may not be automatically captured.

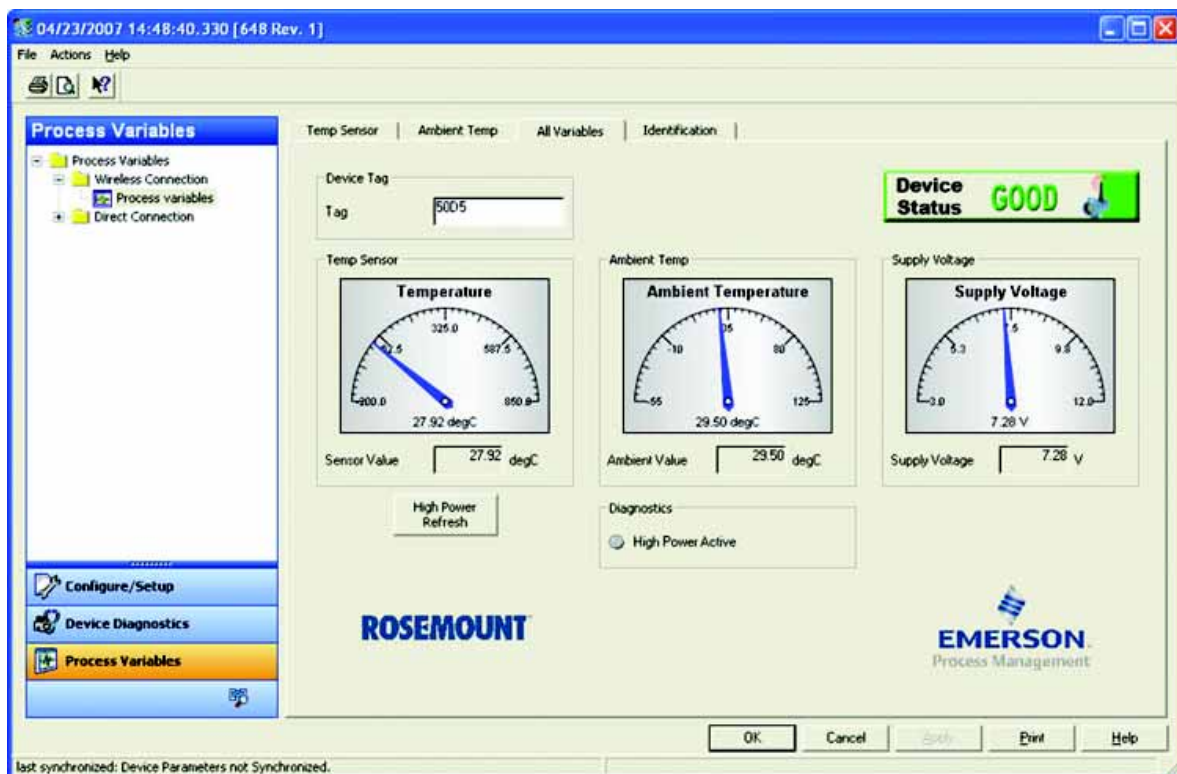


FIGURE 2. AMS Device Manager's enhanced graphical interface provides you with clear indications of device status and process variables, extending the benefits of PlantWeb® to WirelessHART devices.

Interface Architecture

The Wireless Interface for AMS Device Manager supports the 1420 Wireless Gateway and devices connected to it. Configuration is quick and easy, and SmartStart™ services are available to help you get started.

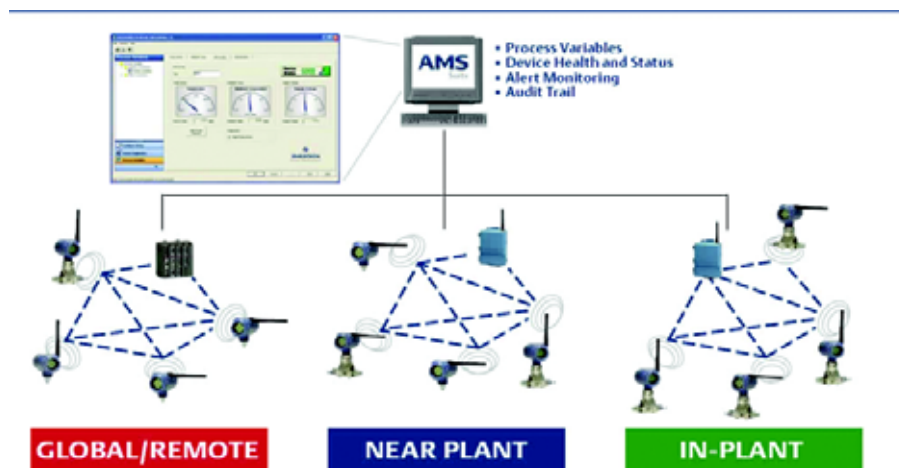


FIGURE 3. Use AMS Device Manager to communicate with all your devices, regardless of where they are located.

Real-Time Remote Diagnostics

Wireless technology also lets you access diagnostics from your most remote devices. Through the Remote Operations Controller (ROC) System Interface, you can use AMS Device Manager to view, configure, and diagnose WirelessHART devices connected to a ROC network.

With real-time diagnostic information, you can eliminate unnecessary and expensive trips to the field and make sure your maintenance personnel know what the problem is and have the tools to correct it when they do make a trip. You can also reduce downtime by troubleshooting small problems from your control room before they become big ones in the field.

Communicate with Your Near-Plant Assets

Monitoring near-plant assets has always been a challenge. Physical distance and barriers such as rivers and highways make wired connections expensive to install and difficult to maintain.

Wireless technology provides a cost-effective way to automate near-plant applications using the 1420 Wireless Gateway, you can easily connect your control room and AMS Device Manager to your near-plant assets for configuration and alarms. You can reduce unnecessary “equipment check” trips through the availability of these remote diagnostics.

Reach New Areas in Your Plant

Overcome economic and technical barriers in your plant by using wireless technology to reach areas that were too expensive or difficult to monitor using wired connections. With more real-time data, you can increase process uptime, improve consistency, and detect emissions more quickly.

Use AMS Device Manager for configuration, calibration, and documentation of all your in-plant assets, wireless and wired, to improve maintenance efficiency.

SmartStart Services

To ensure that you are ready to operate the network after it is installed, Emerson provides on-the-job training in network fundamentals, basic operation and troubleshooting.

As a part of SmartStart Services, our technicians will provide training on how to use the equipment correctly, perform routine maintenance, and diagnose and resolve potential issues. SmartStart Services ensure that your wireless start-up is as smooth and efficient as possible.



AMS Suite: Intelligent Device Manager powers PlantWeb through predictive and proactive maintenance of intelligent field devices to improve availability and performance.

*The Emerson logo is a trade mark and service mark of Emerson Electric Co.
Rosemount and the Rosemount logotype are registered trademarks of Rosemount Inc.
PlantWeb and AMS are a mark of one of the Emerson Process Management companies.
All other marks are the property of their respective owners.*

Standard Terms and Conditions of Sale can be found at www.rosemount.com/terms_of_sale

Emerson Process Management

Asset Optimization Division

12001 Technology Drive
Eden Prairie, MN 55344 USA
T 1(952) 828-3206
F 1(952) 828-3033

www.assetweb.com



EMERSON
Process Management