



Industrial Process and Sensor

2109 Holland Street
Alton, Illinois 62002

Phone 618-465-7623

FAX 618-465-7623

WE CAN TAKE THE *HEAT!*

Thermowell Data

This Section Contains

Flanged Thermowells

General reference data



Please For Quote.

If you can't find what you need



Just CALL!!

From Illinois 618-465-7623

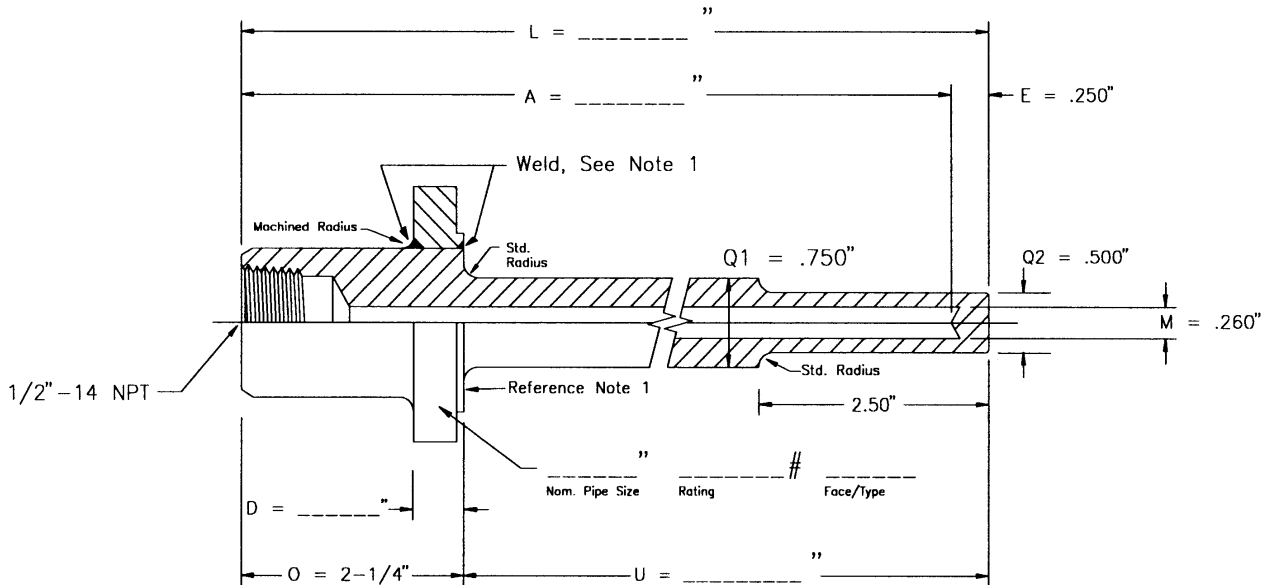
From St. Louis 314-231-0752

Fax 618-465-7679

E-mail info@ipscustom.com

FLANGED THERMOWELLS

SERIES FR .260



FLG (NPS) SIZE	RATING	FACE / TYPE	CODE NUMBER	INSERT LENGTH U	STEM LGTH A
*	*	*	Ref. Note 2 -U	2	4
			FR .260 - U	4	6
				7	9
				10	12
				13	15
				16	18
				22	24

* Customer supplied specifications.

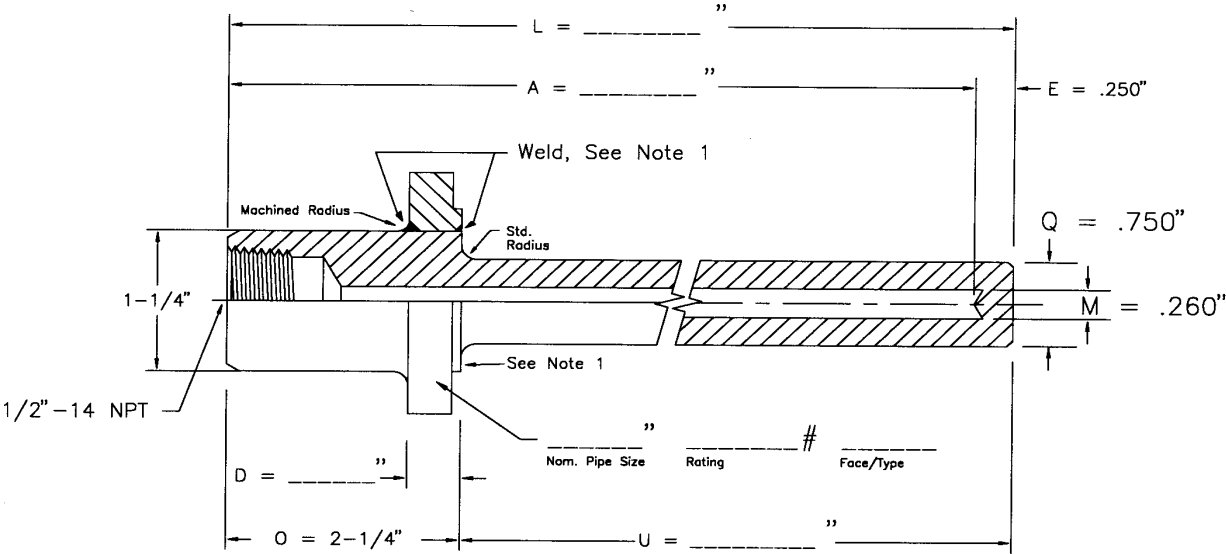
Note 1: Reference Doc. No. TX-PFT for welding and gasket surface finish information.

Note 2: When U = 2-1/2" or less, the "U" length is manufactured straight construction and the outside diameter is determined by Series specified, for example:

- Series FR: Q1 and Q2 = 1/2" o.d. for all Process Connection sizes.
- Series FS: Consult the "Series FS .260" catalog page to determine the correct diameter.

FLANGED THERMOWELLS

SERIES FS .260

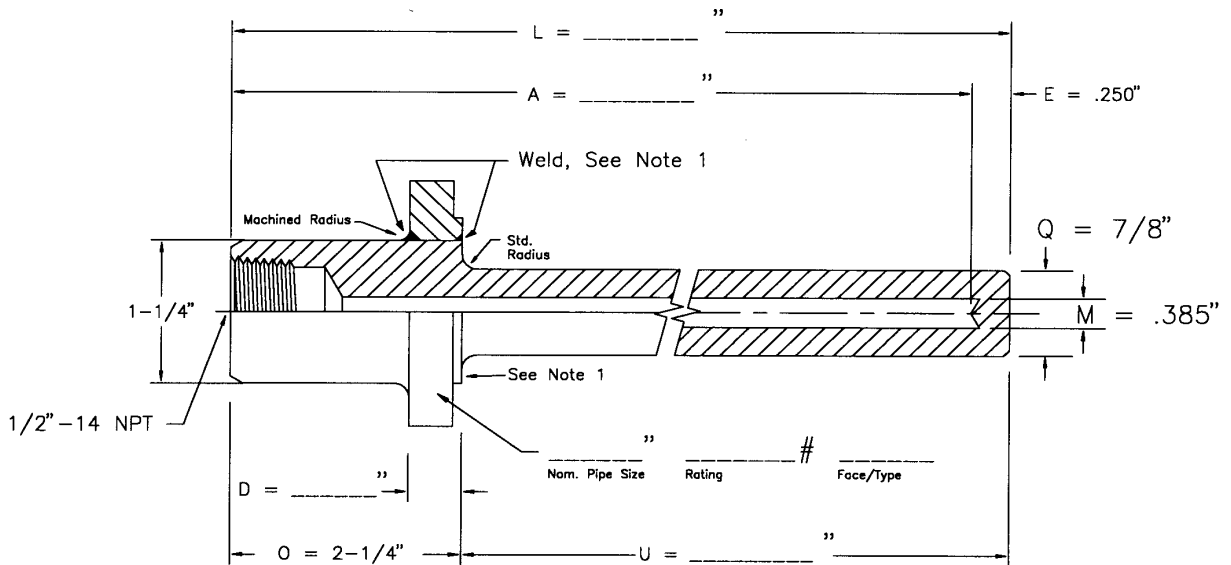


FLG (NPS) SIZE	RATING	FACE / TYPE	CODE NUMBER	INSERT LENGTH U	STEM LGTH A
*	*	*	FS .260 - U	2	4
				4	6
				7	9
				10	12
				13	15
				16	18
				22	24

* Customer supplied specifications.
Note 1: Reference Doc. No. TX-PFT for welding and gasket surface finish information.

FLANGED THERMOWELLS

SERIES FS .385



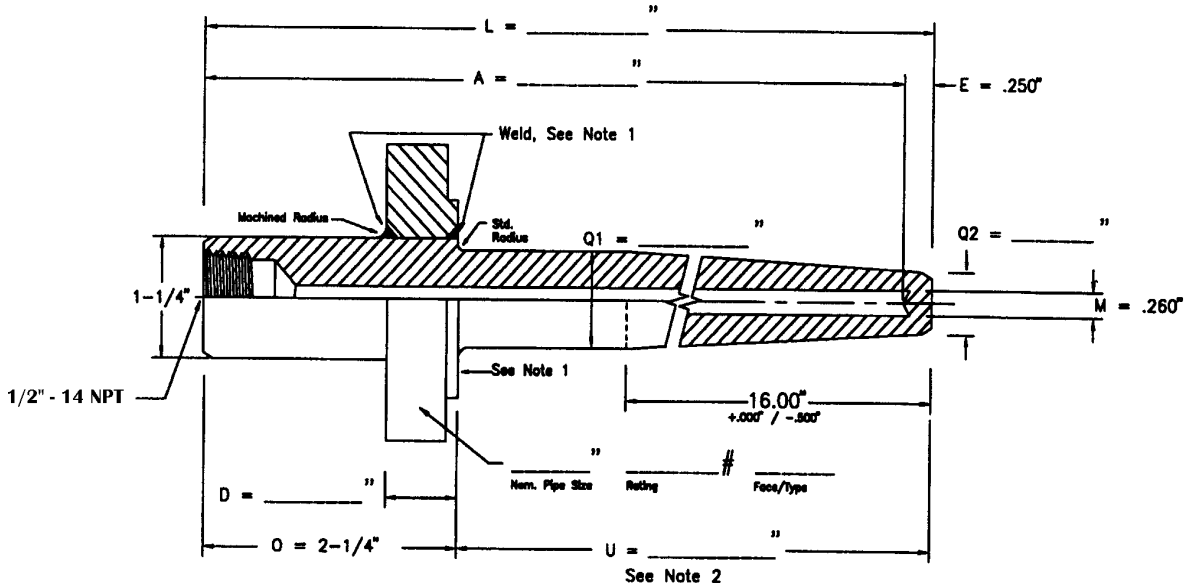
FLG (NPS) SIZE	RATING	FACE / TYPE	CODE NUMBER	INSERT LENGTH U	STEM LGTH A
*	*	*	FS .385 - U	2	4
				4	6
				7	9
				10	12
				13	15
				16	18
				22	24

* Customer supplied specifications.

Note 1: Reference Doc. No. TX-PFT for welding and gasket surface finish information.

FLANGED THERMOWELLS

SERIES FH .260



FLG (NPS) SIZE	RATING	FACE / TYPE	CODE NUMBER	INSERT LENGTH U	STEM LGTH A	SHANK DIA Q1	SHANK DIA Q2
3/4"	*	*	FH .260 - U	2	4	3/4"	5/8"
				4	6		
				7	9		
				10	12		
				13	15		
				16	18		
				22	24		
1"	*	*	FH .260 - U	2	4	7/8"	5/8"
				4	6		
				7	9		
				10	12		
				13	15		
				16	18		
				22	24		
1-1/2" OR LARGER	*	*	FH .260 - U	2	4	1-1/16"	5/8"
				4	6		
				7	9		
				10	12		
				13	15		
				16	18		
				22	24		

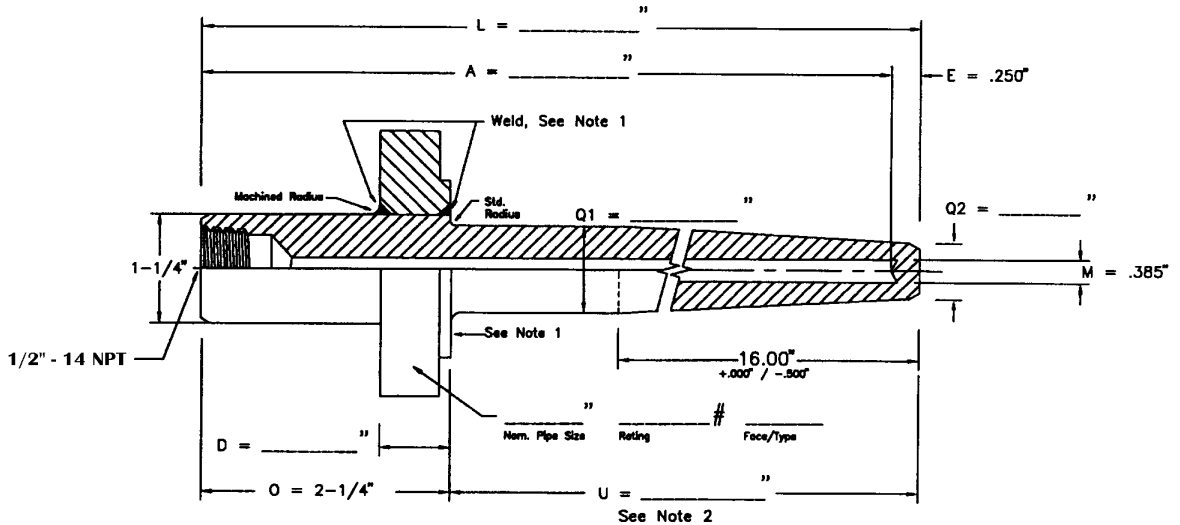
* Customer supplied specifications.

Note 1: Reference Doc. No. TX-PFT for welding and gasket surface finish information.

Note 2: Full length taper provided when "U" <= 16.00"

FLANGED THERMOWELLS

SERIES FH .385



FLG (NPS) SIZE	RATING	FACE / TYPE	CODE NUMBER	INSERT LENGTH U	STEM LGTH A	SHANK DIA Q1	SHANK DIA Q2
3/4"	*	*	FH .385 - U	2	4	3/4"	5/8"
				4	6		
				7	9		
				10	12		
				13	15		
				16	18		
				22	24		
1"	*	*	FH .385 - U	2	4	7/8"	49/64"
				4	6		
				7	9		
				10	12		
				13	15		
				16	18		
				22	24		
1-1/2" OR LARGER	*	*	FH .385 - U	2	4	1-1/16"	49/64"
				4	6		
				7	9		
				10	12		
				13	15		
				16	18		
				22	24		

* Customer supplied specifications.

Note 1: Reference Doc. No. TX-PFT for welding and gasket surface finish information.

Note 2: Full length taper provided when "U" <= 16.00"