



Industrial Process and Sensor

2109 Holland Street
Alton, Illinois 62002

Phone 618-465-7623

FAX 618-465-7623

WE CAN TAKE THE *HEAT!*

Thermowell Data

This Section Contains

Socket-Weld Thermowells



Please For Quote.

If you can't find what you need



Just CALL!!

From Illinois 618-465-7623

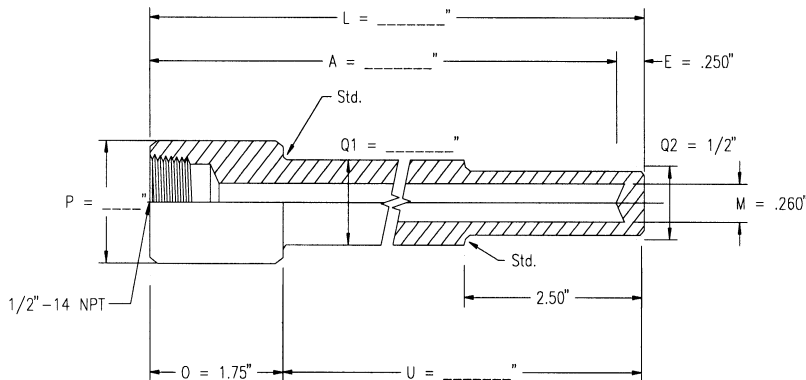
From St. Louis 314-231-0752

Fax 618-465-7679

E-mail info@ipscustom.com

SOCKET-WELD THERMOWELLS

SERIES SWR .260



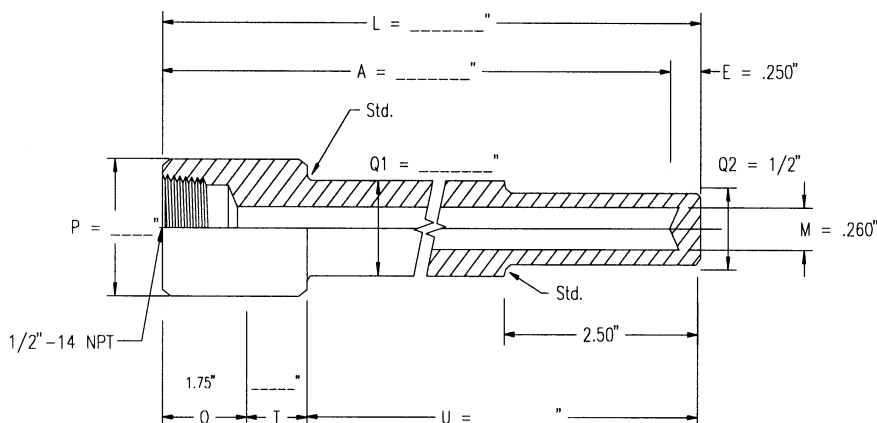
PIPE SIZE P	ACTUAL DIA P	CODE NUMBER	INSERT LENGTH U	STEM LGTH A	SHANK DIA Q1
3/4" Nominal	1.050	Ref. Note 1 - U SWR .260 - U	2-1/2	4	1/2
			4-1/2	6	3/4
			7-1/2	9	3/4
			10-1/2	12	3/4
			13-1/2	15	3/4
			16-1/2	18	3/4
			22-1/2	24	3/4
1" Nominal	1.315	Ref. Note 1 - U SWR .260 - U	2-1/2	4	3/4
			4-1/2	6	7/8
			7-1/2	9	7/8
			10-1/2	12	7/8
			13-1/2	15	7/8
			16-1/2	18	7/8
			22-1/2	24	7/8

Note 1: When U = 2-1/2" or less, the "U" length is manufactured straight construction and the outside diameter is determined by Series specified, for example:

- Series SWR: Q1 and Q2 = 1/2" o.d. for all Process Connection sizes.
- Series SWS: Consult the "Series SWS .260" catalog page to determine the correct diameter.

SOCKET-WELD THERMOWELLS

SERIES SWRL .260



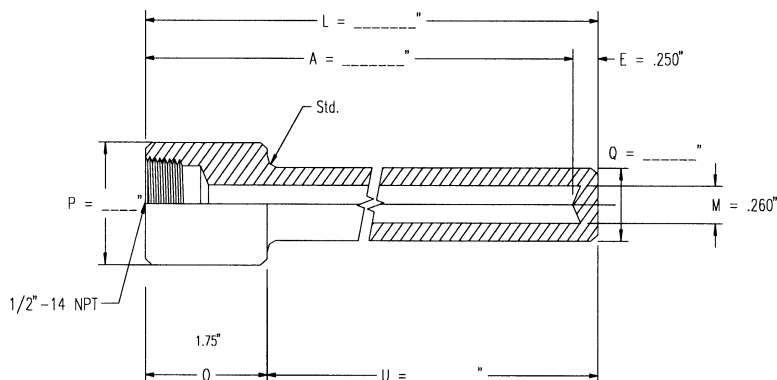
PIPE SIZE P	ACTUAL DIA P	CODE NUMBER	INSERT LENGTH U	LAG EXT T	STEM LGTH A	SHANK DIA Q1
3/4" Nominal	1.050	Ref. Note 1 - U SWRL .260 - U	2-1/2	T2	6	1/2
			4-1/2	T3	9	3/4
			7-1/2	T3	12	3/4
			10-1/2	T3	15	3/4
			13-1/2	T3	18	3/4
			16-1/2	T3	21	3/4
			19-1/2	T3	24	3/4
1" Nominal	1.315	Ref. Note 1 - U SWRL .260 - U	2-1/2	T2	6	3/4
			4-1/2	T3	9	7/8
			7-1/2	T3	12	7/8
			10-1/2	T3	15	7/8
			13-1/2	T3	18	7/8
			16-1/2	T3	21	7/8
			19-1/2	T3	24	7/8

Note 1: When $U = 2-1/2''$ or less, the "U" length is manufactured straight construction and the outside diameter is determined by Series specified, for example:

- Series SWRL: Q1 and Q2 = Q1 Dimension in above matrix.
- Series SWSL: Consult the "Series SWSL .260" catalog page to determine the correct diameter.

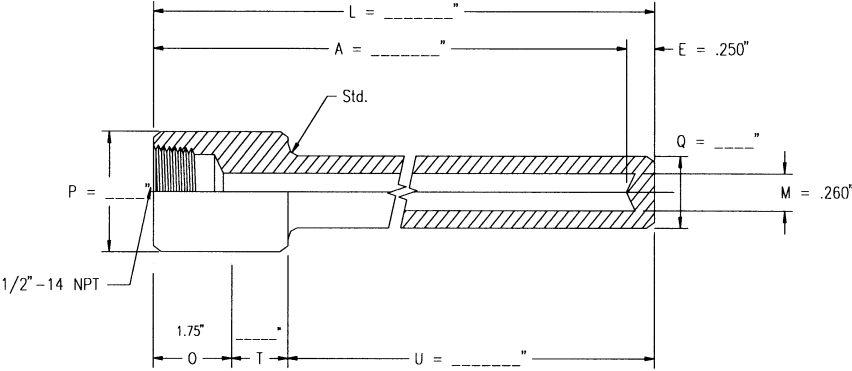
SOCKET-WELD THERMOWELLS

SERIES SWS .260



PIPE SIZE P	ACTUAL DIA P	CODE NUMBER	INSERT LENGTH U	STEM LGTH A	SHANK DIA Q
3/4" Nominal	1.050	SWS .260 - U	2-1/2	4	1/2
			4-1/2	6	3/4
			7-1/2	9	3/4
			10-1/2	12	3/4
			13-1/2	15	3/4
			16-1/2	18	3/4
			22-1/2	24	3/4
1" Nominal	1.315	SWS .260 - U	2-1/2	4	3/4
			4-1/2	6	7/8
			7-1/2	9	7/8
			10-1/2	12	7/8
			13-1/2	15	7/8
			16-1/2	18	7/8
			22-1/2	24	7/8

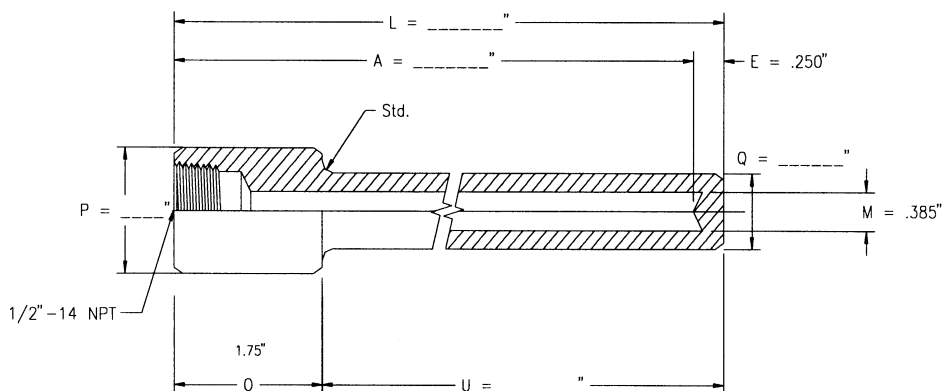
SOCKET-WELD THERMOWELLS SERIES SWSL .260



PIPE SIZE P	ACTUAL DIA P	CODE NUMBER	INSERT LENGTH U	LAG EXT T	STEM LGTH A	SHANK DIA Q
3/4" Nominal	1.050	SWSL .260 - U	2-1/2	T2	6	1/2
			4-1/2	T3	9	3/4
			7-1/2	T3	12	3/4
			10-1/2	T3	15	3/4
			13-1/2	T3	18	3/4
			16-1/2	T3	21	3/4
			19-1/2	T3	24	3/4
1" Nominal	1.315	SWSL .260 - U	2-1/2	T2	6	3/4
			4-1/2	T3	9	7/8
			7-1/2	T3	12	7/8
			10-1/2	T3	15	7/8
			13-1/2	T3	18	7/8
			16-1/2	T3	21	7/8
			19-1/2	T3	24	7/8

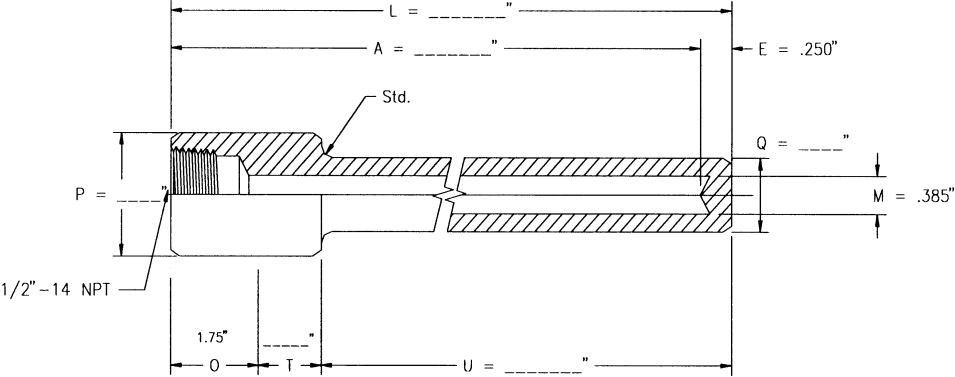
SOCKET-WELD THERMOWELLS

SERIES SWS .385



PIPE SIZE P	ACTUAL DIA P	CODE NUMBER	INSERT LENGTH U	STEM LGTH A	SHANK DIA Q1
3/4" Nominal	1.050	SWS .385 - U	2-1/2	4	49/64
			4-1/2	6	
			7-1/2	9	
			10-1/2	12	
			13-1/2	15	
			16-1/2	18	
			22-1/2	24	
1" Nominal	1.315	SWS .385 - U	2-1/2	4	49/64
			4-1/2	6	7/8
			7-1/2	9	7/8
			10-1/2	12	7/8
			13-1/2	15	7/8
			16-1/2	18	7/8
			22-1/2	24	7/8

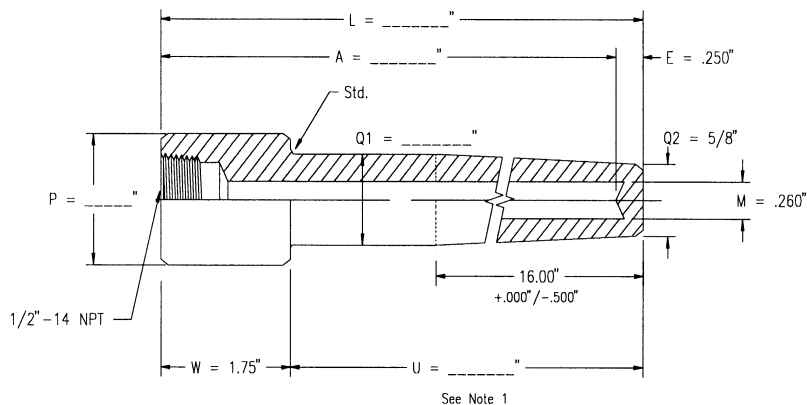
SOCKET-WELD THERMOWELLS SERIES SWSL .385



PIPE SIZE P	ACTUAL DIA P	CODE NUMBER	INSERT LENGTH U	LAG EXT T	STEM LGTH A	SHANK DIA Q
3/4" Nominal	1.050	SWSL .385 - U	2-1/2	T2	6	49/64
			4-1/2	T3	9	
			7-1/2	T3	12	
			10-1/2	T3	15	
			13-1/2	T3	18	
			16-1/2	T3	21	
			19-1/2	T3	24	
1" Nominal	1.315	SWSL .385 - U	2-1/2	T2	6	49/64
			4-1/2	T3	9	7/8
			7-1/2	T3	12	7/8
			10-1/2	T3	15	7/8
			13-1/2	T3	18	7/8
			16-1/2	T3	21	7/8
			19-1/2	T3	24	7/8

SOCKET-WELD THERMOWELLS

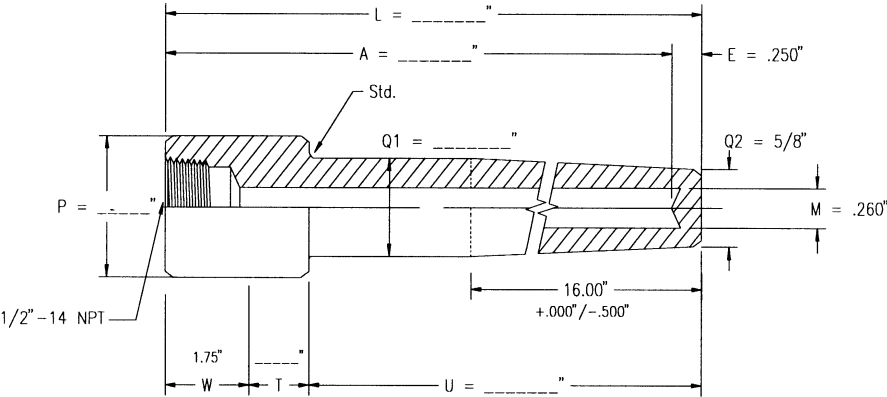
SERIES SWH .260



PIPE SIZE P	ACTUAL DIA P	CODE NUMBER	INSERT LENGTH U	STEM LGTH A	SHANK DIA Q1
3/4" Nominal	1.050	SWH .260 - U	2-1/2	4	3/4"
			4-1/2	6	
			7-1/2	9	
			10-1/2	12	
			13-1/2	15	
			16-1/2	18	
			22-1/2	24	
1" Nominal	1.315	SWH .260 - U	2-1/2	4	1"
			4-1/2	6	
			7-1/2	9	
			10-1/2	12	
			13-1/2	15	
			16-1/2	18	
			22-1/2	24	

Note 1: Full length taper provided when "U" <= 16.00"

SOCKET-WELD THERMOWELLS SERIES SWHL .260



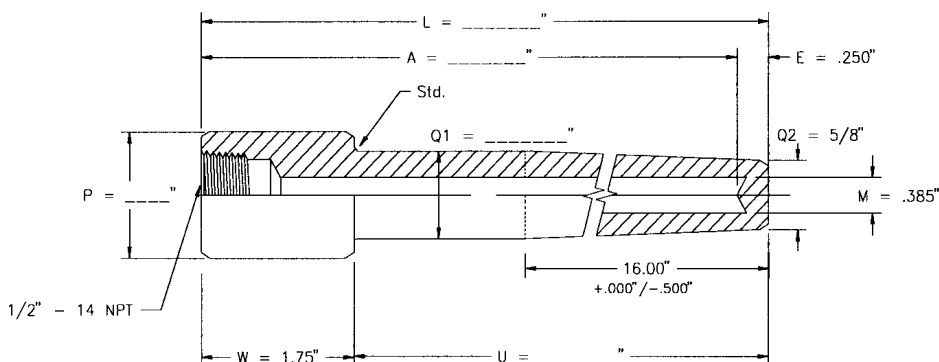
See Note 1

PIPE SIZE P	ACTUAL DIA P	CODE NUMBER	INSERT LENGTH U	LAG EXT T	STEM LGTH A	SHANK DIA Q1
3/4" Nominal	1.050	SWHL .260 - U	2-1/2	T2	6	3/4"
			4-1/2	T3	9	
			7-1/2	T3	12	
			10-1/2	T3	15	
			13-1/2	T3	18	
			16-1/2	T3	21	
1" Nominal	1.315	SWHL .260 - U	19-1/2	T3	24	1"
			2-1/2	T2	6	
			4-1/2	T3	9	
			7-1/2	T3	12	
			10-1/2	T3	15	
			13-1/2	T3	18	
			16-1/2	T3	21	
			19-1/2	T3	24	

Note 1: Full length taper provided when "U" <= 16.00"

SOCKET-WELD THERMOWELLS

SERIES SWH . 385



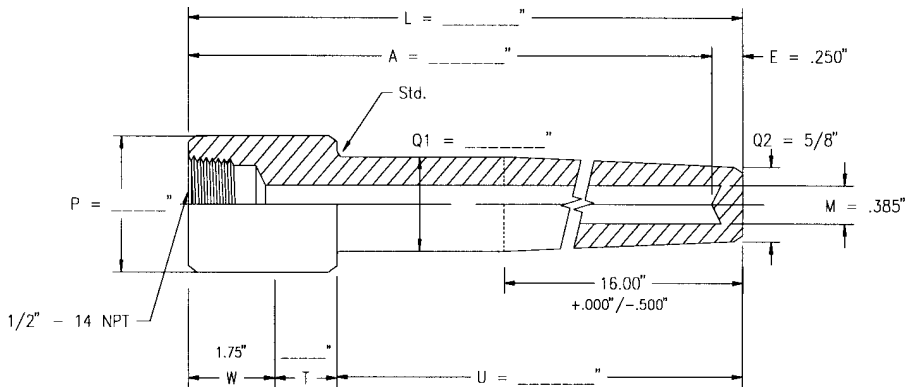
See Note 1

PIPE SIZE P	ACTUAL DIA P	CODE NUMBER	INSERT LENGTH U	STEM LGTH A	SHANK DIA Q1
3/4" Nominal	1.050	SWH .385 - U	2-1/2	4	3/4"
			4-1/2	6	
			7-1/2	9	
			10-1/2	12	
			13-1/2	15	
			16-1/2	18	
			22-1/2	24	
1" Nominal	1.315	SWH .385 - U	2-1/2	4	1"
			4-1/2	6	
			7-1/2	9	
			10-1/2	12	
			13-1/2	15	
			16-1/2	18	
			22-1/2	24	

Note 1: Full length taper provided when "U" <= 16.00"

SOCKET-WELD THERMOWELLS

SERIES SWHL .385



See Note 1

PIPE SIZE P	ACTUAL DIA P	CODE NUMBER	INSERT LENGTH U	LAG EXT T	STEM LGTH A	SHANK DIA Q1
3/4" Nominal	1.050	SWHL .385 - U	2-1/2	T2	6	3/4"
			4-1/2	T3	9	
			7-1/2	T3	12	
			10-1/2	T3	15	
			13-1/2	T3	18	
			16-1/2	T3	21	
			19-1/2	T3	24	
1" Nominal	1.315	SWHL .385 - U	2-1/2	T2	6	1"
			4-1/2	T3	9	
			7-1/2	T3	12	
			10-1/2	T3	15	
			13-1/2	T3	18	
			16-1/2	T3	21	
			19-1/2	T3	24	

Note 1: Full length taper provided when "U" <= 16.00"