

# Universal Two-Wire Transmitter

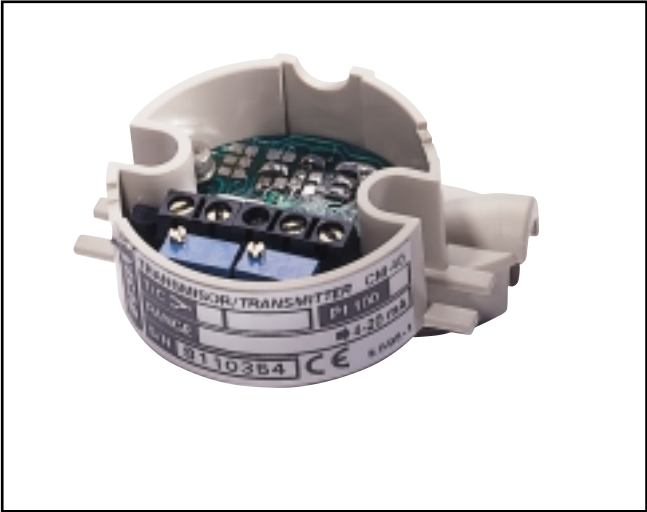
Thermocouple or RTD input provides 4-20mA Linear Output

## Features:

- Surface Mount design ensures repeatability and precision
- ABS construction with protective cover
- Mounts on the sensor head of a temperature probe
- Programmable J, K Thermocouple or Pt 100 ohm RTD inputs
- 4-20mA non-linearized Output with 0.1% FS accuracy
- Configurable temperature ranges plus fine ZERO and SPAN adjustments
- Easily field-calibrated
- Cold Junction Compensated (CJC)

## Applications:

- Minimizes noise effects and eliminates the need for power compensation in long cable run installations



Specifications	Range (User Configurable)	Linearity	Accuracy
Type J Thermocouple	32 to 750°F (0 to 400°C) Standard Configurable from 32 to 1470°F (0 to 800°C) Soldering required	0.06%	±0.1% Full scale
Type K Thermocouple	32 to 1470°F (0 to 800°C) Standard Configurable from 32 to 2190°F (0 to 1200°C) Soldering required		
RTD Pt 100 ohm (3-wire)	32 to 480°F (0 to 250°C) Standard Configurable from -150 to 930°F (-100 to 500°C) Soldering required		
RTD Excitation Current	0.23mA DC		
Circuit break-protect	Upscale >30mA		
Power Supply	12 to 45V DC polarity protected		
Load capability	600Ω max. at 24VDC		
Maximum CJC Temperature	32 to 122°F (0 to 50°C)		
Probe head mount	Mounts on probe heads with mounting holes from 1.3 to 1.9" (33 to 49mm)		
Enclosure protection	Nema 2 (IP-42)		
Operating Temperature	-4 to 158°F (-20 to 70°C)		
Dimensions	1.7" (43mm) dia.: 1" (26mm) high		
Weight	0.8 oz. (25g)		

## Ordering Information:

- 405000 .....Universal Two-Wire Transmitter (RTD) 32 to 480°F  
40500J .....Universal Two-Wire Transmitter (Type J) 32 to 750°F  
40500K .....Universal Two-Wire Transmitter (Type K) 32 to 1470°F  
40500X .....J, K, or RTD Custom Range